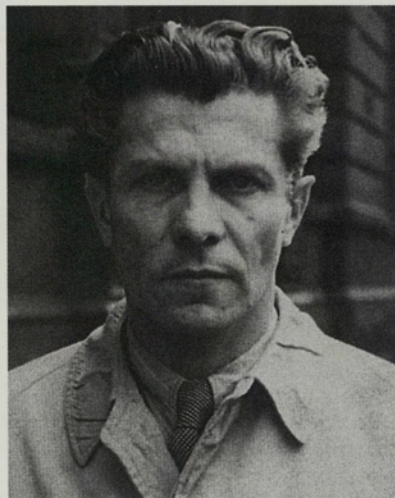


AN INVITATION TO THE OPENING OF
ERNST PLISCHKE
ARCHITECT



PRESENTED BY THE NEW ZEALAND INSTITUTE OF ARCHITECTS

6 PM TO 8 PM SATURDAY
4 SEPTEMBER AT CITY GALLERY
WELLINGTON, CIVIC SQUARE.

PAULA SAVAGE, DIRECTOR, CITY GALLERY
WELLINGTON AND GORDON MOLLER, PRESIDENT
OF THE NEW ZEALAND INSTITUTE OF ARCHITECTS

**ARE PLEASED TO INVITE YOU TO
THE OPENING OF ERNST PLISCHKE.**

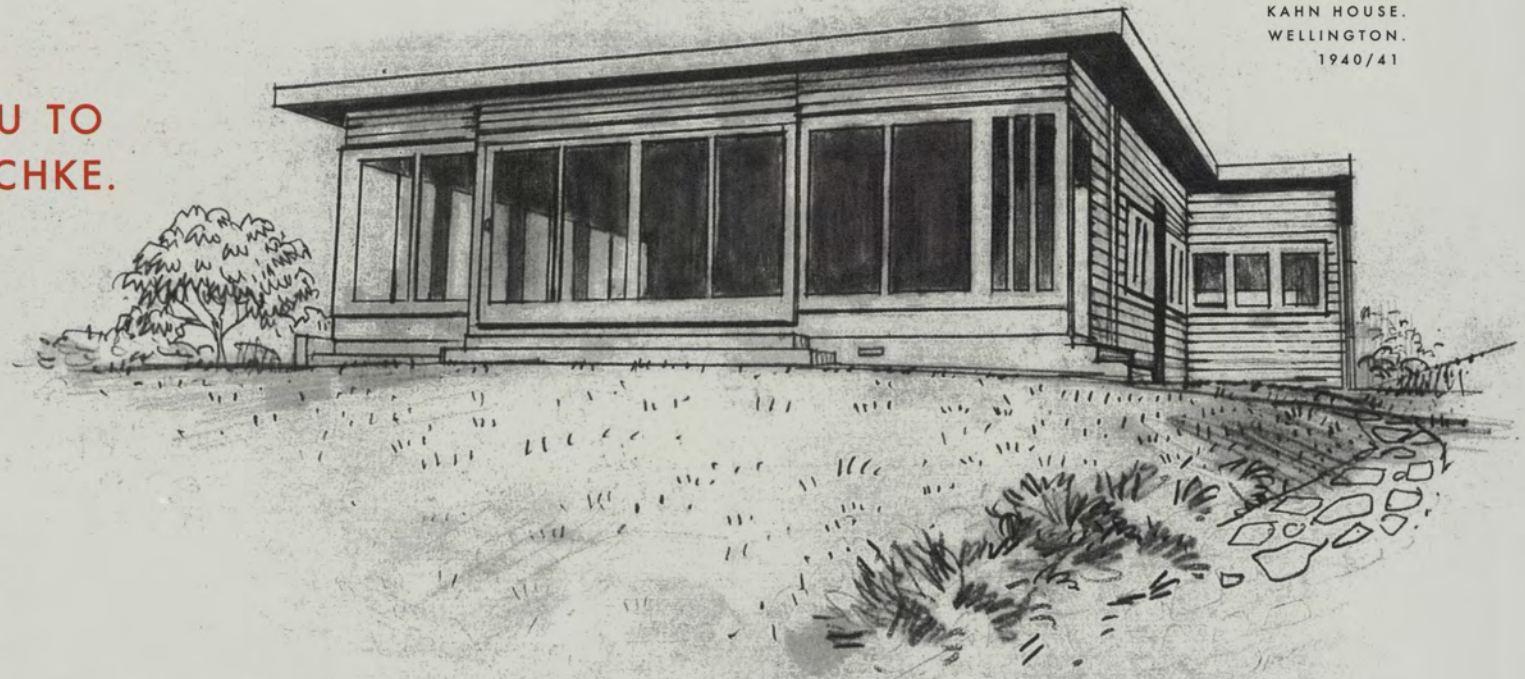
THIS SUPREME ARCHITECT AND MODERNIST
VISIONARY SETTLED IN NEW ZEALAND AND
ESTABLISHED AN INCREDIBLE BODY OF WORK.
MANY OF THESE BUILDINGS ARE NOW REVERED IN
EUROPE. THIS IS OUR CHANCE TO CELEBRATE HIS
PROFOUND INFLUENCE ON OUR LANDSCAPE.

THIS INVITATION EXTENDS TO TWO PEOPLE. PLEASE RSVP
ACCEPTANCES ONLY BY TUESDAY 31 AUGUST TO: KATE FIELDER.
TELEPHONE: 04 801 3017. EMAIL: ART.GALLERY@WCC.GOV.T.NZ

ADMISSION IS BY INVITATION ONLY.
THIS IS A PERSONAL INVITATION AND IS NOT TRANSFERABLE.

ORGANISED BY THE CITY GALLERY WELLINGTON IN PARTNERSHIP WITH THE AKADEMIE DER BILDENDEN KUNSTE (ACADEMY OF FINE ARTS) VIENNA AND THE KAISERLICHES HOFMOBILIENDEPOT (IMPERIAL FURNITURE COLLECTION) VIENNA

KAHN HOUSE.
WELLINGTON.
1940/41



HOPE YOU CAN MAKE IT.

